

**Education and Student Service Center  
(International Relations Office)**

Den Dolech 2, 5612 AZ Eindhoven  
Postbus 513, 5600 MB Eindhoven  
The Netherlands  
[www.tue.nl](http://www.tue.nl)

Main Building HG 0.74, Postbus 513, 5600 MB Eindhoven

**Date**  
November 2009

**Contact**  
T 040 247 4747  
[io@tue.nl](mailto:io@tue.nl)

**Our reference**  
STU IO /11 2009

Dear colleague,

We are pleased to present our study information materials for the academic year 2010 - 2011. This box comprises information on Master's degree programs and TU/e Talent Scholarship Program (TSP). The box contains a general brochure with information about studying at TU/e, leaflets of all English MSc programs at our university, a leaflet about the TSP program and separate leaflet "introducing myself".

The TU/e offers many opportunities to highly talented International students. Besides the opportunity to follow a 2 year master program at our university known for its top research and education, TU/e offers many facilities which make studying at TU/e an excellent experience. You can think of scholarships, loan opportunities, help with finding accommodation, study guidance and an extensive introduction program.

For more information about study information or studying at the TU/e please visit our website [www.tue.nl/en](http://www.tue.nl/en)

Or contact:  
International Relations Office  
P.O Box 513 5600 MB Eindhoven  
tel: 31(0)40-247 4747  
fax: 31(0)40- 244 1692  
Email: [io@tue.nl](mailto:io@tue.nl)

Kind regards,



Prof.dr.ir. Hans van Duijn  
Rector  
Eindhoven University of Technology



Where innovation starts

# TU/e Talent Scholarship Program

Start your international career at one of Europe's best universities of technology!

#### Yaqing Sun - China

"The education level of TU/e absolutely exceeds my expectations."

#### Vanessa Restrepo Uribe - Colombia

"The Carnival festival is a totally crazy experience and nice to see"

#### Ashwin Palande - India

"As a TU/e student you're close to the latest technology developments."

#### Great career opportunities

Do you want to take your Master's at a leading international university? And do you want to follow that with work experience at a global high-tech company?.....then this is your chance! Eindhoven University of Technology (TU/e), together with international high-tech companies offers scholarships to top international students.

#### TU/e Talent Scholarship Program (TSP)

We are proud to announce that since May 2010 TSP scholarships are to be known as the Amandus H. Lundqvist Scholarship Program, named after the former President of the TU/e Executive Board, who retired in 2010. In all communication the name TU/e Talent Scholarship Program with abbreviation TSP will still be used. Each year a considerable number of TSP scholarships are awarded by the TU/e partnered by top international technology companies and institutes situated in the Eindhoven region and the rest of the Netherlands. Currently ASML, NXP, Océ, Vredestein and Philips are all involved in TSP. The scholarships are awarded to students with the best grades from their previous education at respected universities outside the Netherlands. The TSP scholarships are for 5 year programs: 2 years studying for your Master's at the TU/e followed by 3 years working at an international organization or a PhD program.

TSP scholarships will waive your tuition fees for the nominal duration of the two-year Master's program. In addition TSP will pay a €8,500 contribution to your living costs each academic

year for the two years of the Master's program. This amount will be adjusted each academic year in line with the national norm for student living costs in the Netherlands. TSP will also pay half of the costs to obtain your visa (in case applicable). The TU/e expects all its scholarship students to take advantage of the tremendous employment opportunities in the Netherlands and to remain here for at least three years after graduating from the TU/e Master's program. You will gain international work experience and increase your future career opportunities.

The TU/e will match your academic background and particular skills to the requirements of the organizations that fund the scholarships (TU/e and companies). If you are unable to secure a scholarship or other funding for your TU/e Master's studies, you also have the possibility to access a TU/e loan. Details on this special TU/e loan can be found on

[www.tue.nl/masterprograms](http://www.tue.nl/masterprograms).

#### Attractive careers in the technological heart of the Netherlands

The TU/e prides itself on its reputation as being the worldwide number 1 university for scientific output in cooperation with industry.

Furthermore, the Eindhoven region – also known as Brainport Eindhoven – is one of the most innovative centers for advanced technology in Europe. It has, for example, been the base for the technology giant Phillips Electronics for more than a century. Many more multinational companies have research, development and production facilities close to Eindhoven, including ASML and Océ, two of the TSP scholarship partners.

## TU/e: a good choice!

- High-quality of education and research
- Excellent student facilities
- Eindhoven is a modern student city
- International contacts with leading universities
- Good relationships with potential employers
- Excellent reputation of engineers from TU/e
- Attractive career opportunities

[www.tue.nl/masterprograms](http://www.tue.nl/masterprograms)



### Stefania Rusu - Romania

“Because of the informal atmosphere it’s easy to make contact with lecturers.”

### Oscar Perez Vega - Mexico

“Working with Dutch students appeals to me, they have a good attitude towards work.”

### Cem Hazar - Turkey

“I follow a Dutch language course because I would like to stay here for a while.”

### TU/e...where innovation starts

TU/e is a young, modern university with an open, informal and friendly atmosphere. Eindhoven University of Technology specializes in engineering sciences and technology and is internationally respected, appearing in the Times Education Supplements ranking of the top 200 universities worldwide. With its high quality teaching and research, TU/e makes a large contribution to progress in the technical sciences and in technological innovation. As a TU/e student you will be at the heart of these developments.

TU/e values the international exchange of knowledge and participates in European networks of leading universities of technology. There are also strong alliances with leading universities in many countries all over the world. There are currently more than 40 nationalities studying or working at TU/e.

### TU/e Master’s programs

The Master’s degrees at TU/e take two academic years and are conducted in English. TU/e offers 27 Master’s programs. There is a wide choice of specializations and once you have successfully completed your studies you would be granted a Master of Science (MSc).

After application, TU/e offers you to help in finding suitable housing, a buddy during the intensive 3 week TU/e Introduction Program and assistance with priority visa applications.

Full information on all TU/e Master’s programs, scholarships and the application procedure can be found on [www.tue.nl/masterprograms](http://www.tue.nl/masterprograms).

### So where is TU/e?

The TU/e is located in Eindhoven, the fifth largest city of The Netherlands (often called Holland), situated in the south-east of the country and approximately 50 kilometers from the German and Belgian borders. The official language of the Netherlands is Dutch, but most Dutch people understand and speak English. The country has a knowledge-based society; its prosperity is primarily based on advanced, global services. Eindhoven is a modern city with a lively cultural scene.

### Don’t wait too long to apply...

The scholarships are allocated to selected excellent students on a first-come, first-serve basis.

If you are an excellent student, don’t leave your application to the last minute or it is possible that you may miss the chance to gain a TSP scholarship. Full details on how to apply can be found on the website [www.tue.nl/masterprograms](http://www.tue.nl/masterprograms) or you can contact:

### TU/e Education and Student Service Center

International Relations Office

PO Box 513

5600 MB Eindhoven, The Netherlands

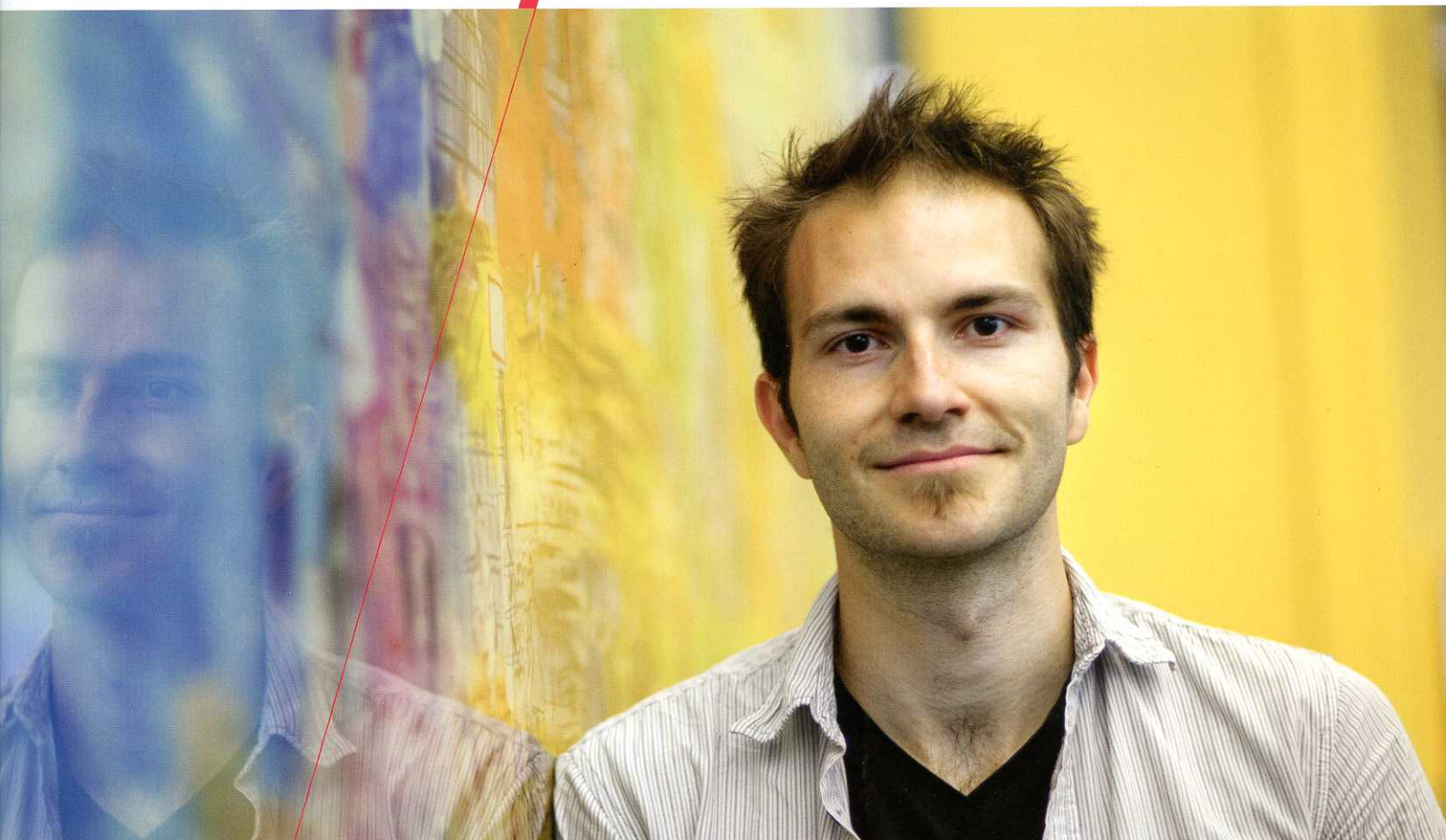
Tel: +31 (0)40 247 4747

Email: [io@tue.nl](mailto:io@tue.nl)

Intake 2011-2012

**TU/e**

Technische Universiteit  
**Eindhoven**  
University of Technology



# Master's degree programs

General information

Explore your mind, be **THE INNOVATOR**

Where innovation starts

## Master's degree programs Intake 2011 - 2012

# Studying at TU/e

This is the general guide to the Master's degree programs at Eindhoven University of Technology (TU/e) in the Netherlands. This guide gives you all the information you need about education, research, student life and the university itself, as well as what you have to do when you have decided to study in Eindhoven.

A brochure is also available for each individual Master's program. You can download these or order them from our study information website: [www.tue.nl/masterprograms](http://www.tue.nl/masterprograms).

Of course we will also tell you about the Netherlands and the high-tech region in which TU/e is located. Because even before you start reading this guide, you should know that studying in Eindhoven means you are studying in an environment in which technology is a central factor. It is the city where Philips has made some of its greatest inventions such as the audio CD and the more recent flexible display. But Eindhoven has a lot more to offer.

It is the home of dozens of companies and research institutes that are leading the way in advanced technologies and their applications. Thousands of researchers from all over the world are also working here on the technologies of the future. Together with TU/e, that adds up to an environment in which everyone with an interest in technology will feel totally at home. It is not surprising, therefore, that many Master's students at TU/e don't want to leave this very special research environment after they graduate, and they find jobs here that give them the opportunity to focus entirely on technology.

I hope you will make the right choice and decide to come to Eindhoven for your Master's program at TU/e!

Prof.dr.ir. C.J. van Duijn  
Rector Magnificus  
Eindhoven University of Technology



Technische Universiteit Eindhoven:  
Where innovation starts

Explore your mind, be **THE INNOVATOR**



# Contents

## 1 The Netherlands and Eindhoven 4

- About the Netherlands
- About Eindhoven

## 2 TU/e: Where innovation starts 6

- Engineers from TU/e
- Profile of the university
- TU/e number one worldwide in university-industry research
- Research at TU/e
- Education and research closely linked
- 3TU.Federation: a partnership of three universities of technology in the Netherlands
- Knowledge in practice
- Partnership in the research field
- Internationalization

## 3 Master's programs at TU/e 10

- Master's programs
- Special Master's tracks
- The Bachelor's and Master's structure in the Netherlands
- A Master's program at TU/e
- Information and Communication Technology (ICT)

## 4 Program structure 14

- A warm welcome for new Master's students
- Ongoing support
- Program structure
- Keeping track of academic records
- Supervision of studies

## 5 After your MSc 16

- PhD
- Postgraduate programs in technological design
- TiasNimbas Business School

## 6 Application, admission and finances 18

- General requirements
- Specific requirements
- Application procedure
- Services after admission
- Scholarships
- Student grant ('Studiefinanciering')
- Tuition fees
- Insurance
- Cost of living
- Jobs

## 7 Facilities 22

- Notebook
- Education and Student Service Center (STU)
- Language courses
- Textbooks and lecture notes
- Child care center

## 8 Eindhoven student city 24

- Going out
- Art and culture
- Sports
- Student centers
- Study associations
- Students associations
- Cultural associations

## 9 Housing 28

- Living in a student house
- Student accommodation

## 10 Useful addresses 30

- TU/e International Relations Office
- Exchange programs
- Nuffic
- Student grants
- Visiting address

The Netherlands is well known for its tulips and its capital city Amsterdam but the country has a lot more to offer. For example Eindhoven, the city which is also referred to as the city of light and which, for several decades, has also been known as the city of advanced technology.



# 1

## The Netherlands and Eindhoven

### About the Netherlands

When you arrive in the Netherlands at Schiphol Airport, you will get a first impression of the polders, ditches, rivers and cities as seen from the air. The Netherlands is also referred to as Holland. If you continue your journey from Schiphol by train, you will see that urban and industrial areas are alternated by fields, forests and lakes.

The country is very flat, which makes the horizon look rather wide. The roads are busy and so are the inland waterways, while there is also a lot of air traffic. Since the Netherlands is a relatively small country (40,000 km<sup>2</sup>) with an extensive rail network, you can reach all the places of interest quickly and easily. The official language is Dutch but, fortunately, most Dutch people understand and even speak English.

The country has a knowledge-based society; its prosperity is primarily based on advanced, global services. That is why there is an attitude of openness towards the rest of the world. It is open to business as well as socially and culturally open-minded. That makes it an ideal environment for students who want to enrich their knowledge abroad.

### About Eindhoven

Eindhoven is located in the south-east of the Netherlands, within 50 kilometers of both the German and Belgian borders. The Eindhoven region is known as Brainport and internationally recognized as a center for advanced technology, and is characterized by knowledge and creativity. Eindhoven is the fifth-largest city in the Netherlands, and number one in terms of technology. It holds a strategic position as one of Western Europe's leading technology centers, and has been the base of the research and development facilities of Royal Philips Electronics for over a century.





Many other global companies have established research, development and production facilities in the Eindhoven area. Eindhoven is a modern city with extensive cultural and sports facilities and has a lot to offer people with a technological focus. As a student you can benefit from the presence of many high-tech companies located both on and near the TU/e campus. You can find more information on Eindhoven at [www.eindhoven.eu](http://www.eindhoven.eu).

As a student you can benefit from the presence of many high-tech companies

---

When you decide to follow a Master's program, you will have to choose a university. If you decide to enroll at TU/e, you will be studying at a university where education and research are closely linked.

## 2 TU/e: Where innovation starts

### Engineers from TU/e

As an engineer, educated in Eindhoven, you will be able to carry out complex analyses and develop solutions based on your findings. You are a problem solver with the ability to design new products, processes and systems. That means you can offer the community new opportunities for sustainability, safety, health, welfare and prosperity. You study in a modern city with excellent student facilities and opportunities for a varied and unforgettable time as a student. As a graduate, TU/e gives you a sound basis for life. You will be able to pick up on new developments independently and focus constantly on new social challenges. TU/e doesn't just train you for a job, but for a career. As an 'Eindhoven-educated engineer', you can look forward to a varied, challenging, lucrative and socially useful career.

### Profile of the university

TU/e is a relatively young and modern university. With 7100 students, 230 professors, 760 doctoral candidates and 3100 employees, TU/e is a medium sized university. TU/e offers 11 Bachelor's programs, 1 special Bachelor's track, 21 Master's programs and 6 special Master's tracks. The difference between programs and special tracks is in their formal status. The relatively new special tracks have not yet been recognized by the government as independent programs. If you graduate in one of these special Bachelor's or Master's tracks, you will receive the diploma of the corresponding recognized Bachelor's or Master's program.

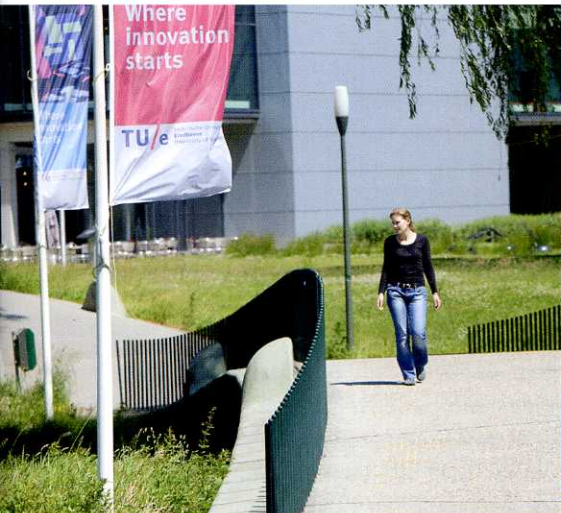
Students find the atmosphere at TU/e open, informal and friendly. It is easy for students to make contact with lecturers and other staff.

TU/e is an internationally renowned university that specializes in engineering science and technology. The university's high-level teaching and research contribute to progress in the technical sciences and

## TU/e: a good choice!

This guide tells you why studying at TU/e is a good choice. Some of the most important reasons are:

- High quality of education and research
- Leading position in international university rankings
- Excellent student facilities
- International contacts with leading universities
- Eindhoven is a modern student city
- Region of Eindhoven, technology hotspot in the Netherlands



to the development of technological innovations and, as a result, to the growth of welfare and prosperity in the Eindhoven region and far beyond.

### TU/e number one worldwide in university-industry research

Of the 350 best research universities worldwide, it is TU/e that creates comparatively the biggest scientific output in cooperation with industry.

TU/e tops a ranking by the Leiden Center for Science and Technology Studies (CWTS), with a score of 11 percent of the publications. This position confirms the unique and close cooperation in R&D between TU/e and the high-tech business sector in Brainport Eindhoven and the rest of the Netherlands.

In the fields of electrical engineering, physics and chemistry and chemical engineering in particular, TU/e boasts remarkably strong cooperation with the business community. Of the scientific publications in the area of electrical engineering alone, more than a quarter is realized in cooperation with enterprises. For physics this is 14.7 percent and for chemistry and chemical engineering it is 13.7 percent. The CWTS study is the first to investigate which universities contribute the most to the scientific knowledge of companies. For their survey they minutely studied data from the Web of Science between 2002 and 2006, checking all university-

industry co-authored research publications.

Web of Science collects the scientific publications of some 14,000 scientific journals. TU/e maintains close links with industry, as well as with the healthcare, building and transport worlds. The university has an international and multicultural community, which is why English is increasingly becoming the lingua franca.

### Research at TU/e

The Eindhoven researchers have access to modern, unique research equipment and laboratories. For example, many departments make use of a large, ultramodern cleanroom on the campus. TU/e is also leading the way in the Netherlands with participation in the Dutch Polymer Institute, the Embedded Systems Institute and, more recently, the Center for Translational Molecular Medicine. TU/e also plays an active role in the Holst Centre for wireless autonomous transducer solutions and system-in-foil products, which was recently established by Philips, IMEC and TNO. Together with industry and government bodies in the region, TU/e is also taking part in numerous projects to strengthen the economic structure of the region. Particularly close links are maintained with Philips Research. More than 20% of the researchers working at Philips Research worldwide were educated at TU/e.

TU/e excels in nine extensive research fields:

- Biomedical Engineering Sciences
- Broadband Telecommunication Technologies
- Catalysis and Process Engineering
- Logistics, Operations and Information Systems
- Mechanics and Control
- Nano-Engineering of Functional Materials and Devices
- Plasma Physics
- Polymer Science and Technology
- Science and Engineering of Embedded Systems.

TU/e wants to develop the following top research institutes:

- Institute for Complex Molecular Systems
- Eindhoven Energy Institute
- Intelligent Lighting Institute.

These five MSc programs are:

- Construction Management and Engineering
- Embedded Systems
- Science Education and Communication
- Sustainable Energy Technology
- Systems and Control.

### Knowledge in practice

TU/e considers it important that knowledge gained at the university can be applied in the community. Numerous products, processes and systems are based on knowledge that originated from TU/e. For example, the CD could never have been created without the work of Eindhoven mathematicians who carried out research into error correction codes. Flexible displays are possible thanks to knowledge developed by polymer and photonics experts at TU/e. And thanks to research by biomedical technologists at TU/e, it will be possible in the future to give heart patients 'natural' heart valve implants that have been grown from stem cells taken from their own bodies. Rejection problems and wear of artificial heart valves will then be things of the past. These are just a few examples of how knowledge from TU/e is put into practice.

TU/e and the universities of technology of Delft and Twente have joined forces in the 3TU Innovation Lab. This lab focuses on 'knowledge valorization': creating an environment in which research, education and entrepreneurship interact and complement each other to the greatest possible extent. The 3TU Innovation Lab translates the results of scientific research into usable products and processes. The activities focus on partnerships with large companies, the development of innovation projects and the promotion of business development through small and medium-sized enterprises. The 3TU Innovation Lab can provide you with support if you want to start a technology-intensive and knowledge-intensive venture as a TU/e graduate.

### Partnership in the research field

As far as research schools are concerned, TU/e has a major role in the Dutch Polymer Institute (DPI), one of the four leading technology institutes in the Netherlands. In addition, TU/e participates in another leading technology institute: Materials innovation institute (M2i). The Ministries of Education, Culture and Science and Economic Affairs fund these technology institutes, and the Ministry of Agriculture, Nature and Food Quality

## Many products, processes and systems are based on TU/e knowledge

### Education and research closely linked

Education at TU/e has strong links with research. This means that as a student you will be close to the latest technological developments, and that you will have a teacher who is also involved with research at TU/e. As well as inspiring lectures, small-scale teaching meetings and supervised self-study, the university also uses design-oriented education as an additional teaching form. You work in teams on technological design assignments, and you have practical internships and graduation projects in industry or government bodies. This means that as a TU/e student you do not only gain a thorough scientific basic training, but you also develop your social and communication skills.

### 3TU.Federation: a partnership of three universities of technology in the Netherlands

The three universities of technology in the Netherlands - Eindhoven University of Technology, Delft University of Technology and the University of Twente - have joined forces in the 3TU.Federation ([www.3tu.nl](http://www.3tu.nl)). This federation maximises innovation by combining and concentrating the strengths of all three universities in research, education and knowledge transfer. Within the framework of this cooperation, five joint MSc programmes have been developed that address key issues in engineering and society.



### THE INNOVATOR

An atomic reactor without nuclear waste? Or tires that self-adjust to the weather and state of the road?

This could be reality in ten years' time. The TU/e innovators create innovative solutions to complex issues. For instance, in the fields of energy, mobility and health. They see the challenges that confront the world and think ahead. It's not without good reason that we say 'TU/e, Where innovation starts'. Are you THE INNOVATOR of the future?

## Explore your mind, be THE INNOVATOR

Conservation supports fundamental strategic research which is relevant to industry. TU/e also supervises two of the six top Dutch research schools: the National Research School Combination Catalysis (NRCS-Catalysis) and the Inter-University Research Institute on Communication Technology Basic Research and Applications (COBRA).

In design, technological knowledge is applied to produce new solutions on a wide range of topics. After your Master's program you can also choose to follow a designer's course at the 3TU.School for Technological Design, Stan Ackermans Institute. But even during your Master's program, the subject of design frequently arises in the design-oriented education. This is based on working in small groups, and involves specialized knowledge from both your own and other programs. The aim is to ensure that scientific and technological knowledge is immediately translated into applications that can be used in society, so that you are trained as an engineer with the ability to provide society with new and better technological products and systems.

### Internationalization

TU/e highly values the international exchange of knowledge and actively encourages its department members, researchers and students to work together with colleagues in other countries. This is shown, for example, by participation in many European Union programs and membership of European networks of leading universities of technology, such as CLUSTER, CESAER, Santander Group and the European University Alliance in Science and Technology (with TU München and Denmark TU). Outside Europe, TU/e also has

strong alliances with leading universities in China, Singapore, India, Turkey and Mexico. In Europe, TU/e has partnerships in Belgium, Germany, Denmark and Austria. Agreements have also been reached with many other European universities under the Erasmus Mundus program. This makes TU/e a university with a real European and global dimension. More than 70 nationalities of students are currently studying and working at TU/e. They have come to TU/e for the quality of its programs and professors, and for the range of facilities offered by the campus in Eindhoven. The university is dedicated to providing its students with the best possible study environment. TU/e offers additional services to assist international students, who may also qualify for a scholarship. For more information, please visit: [www.tue.nl/internationalization](http://www.tue.nl/internationalization).

If you choose a Master's program at TU/e, it is important to know the structure of the programs.



## 3 Master's programs at TU/e

TU/e offers 21 Master's programs and 6 special Master's tracks.



### Master's programs

- Applied Physics
- Architecture, Building and Planning
- Automotive Technology
- Biomedical Engineering
- Building Services
- Business Information Systems
- Chemical Engineering
- Computer Science and Engineering
- Construction Management and Engineering
- Electrical Engineering
- Embedded Systems
- Human-Technology Interaction
- Industrial and Applied Mathematics
- Industrial Design
- Innovation Management
- Innovation Sciences
- Mechanical Engineering
- Medical Engineering
- Operations Management & Logistics
- Sustainable Energy Technology
- Systems and Control

### Special Master's tracks

- Broadband Telecommunication Technologies
- Fluid and Solid Mechanics
- Information Security Technology
- Nano-Engineering
- Polymers and Composites
- Science and Technology of Nuclear Fusion

The difference between programs and special tracks is in their formal status. The relatively new special tracks have not yet been recognized by the government as independent programs. If you graduate in one of these special Master's tracks, you will receive the diploma of the Master's program of the corresponding recognized track.

A brochure is also available for each individual Master's program and each special Master's track. You can download these or order them from our study information website: [www.tue.nl/masterprograms](http://www.tue.nl/masterprograms).



### **The Bachelor's and Master's structure in the Netherlands**

Our study programs are divided into a three-year Bachelor's degree program and a two-year Master's degree program. All our Master's degree programs, except the Medical Engineering program, are taught in English. The Dutch government monitors the quality of all Dutch Master's degrees, to ensure that academic titles are conferred only by recognized institutions and are legally protected in the Netherlands. All courses at TU/e are legally recognized and accredited.

### **A Master's program at TU/e**

During a Master's program you can specialize in various areas. There is a brochure available for each Master's program and special Master's track. You can download these or order them from our study information website: [www.tue.nl/masterprograms](http://www.tue.nl/masterprograms). After gaining your Master's diploma at TU/e you are awarded the academic degree of Master of Science (MSc), and are also entitled to use the Dutch title 'ingenieur' (ir.). On completing a special Master's track you will receive the Master of Science diploma of the corresponding Master's program.

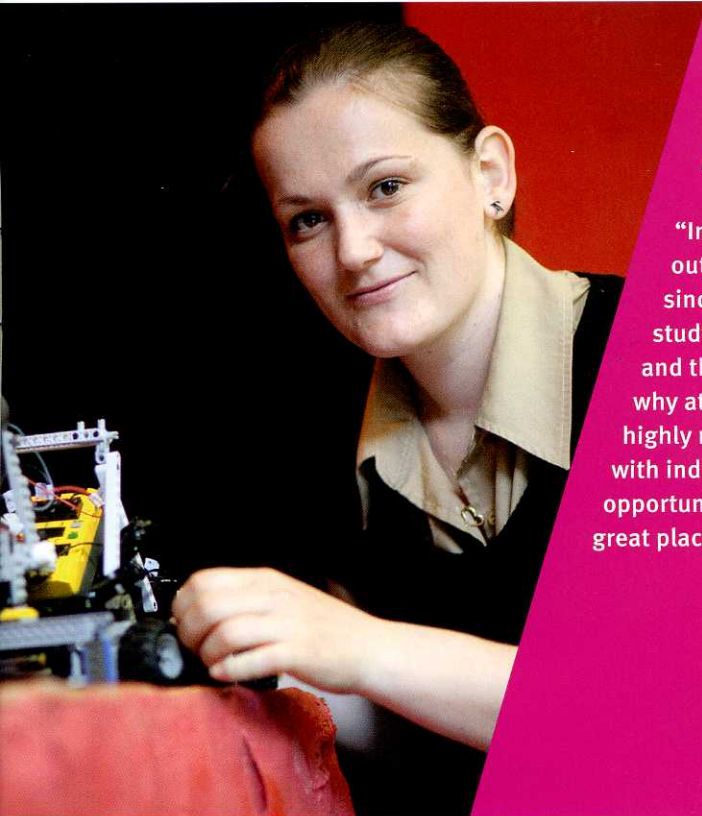
### **Information and Communication Technology (ICT)**

As a Master of Science, you will need to be very familiar with the opportunities that today's Information and Communication Technology offers. This therefore forms an important part of your studies, which is why information and communication technology is an integral part of the educational system at TU/e. You will learn how ICT extends your study and research horizons by using your own notebook computer.

**“Eindhoven is a great place to live;  
the people are nice and speak  
good English”**

---





## Student Emilia Silvas

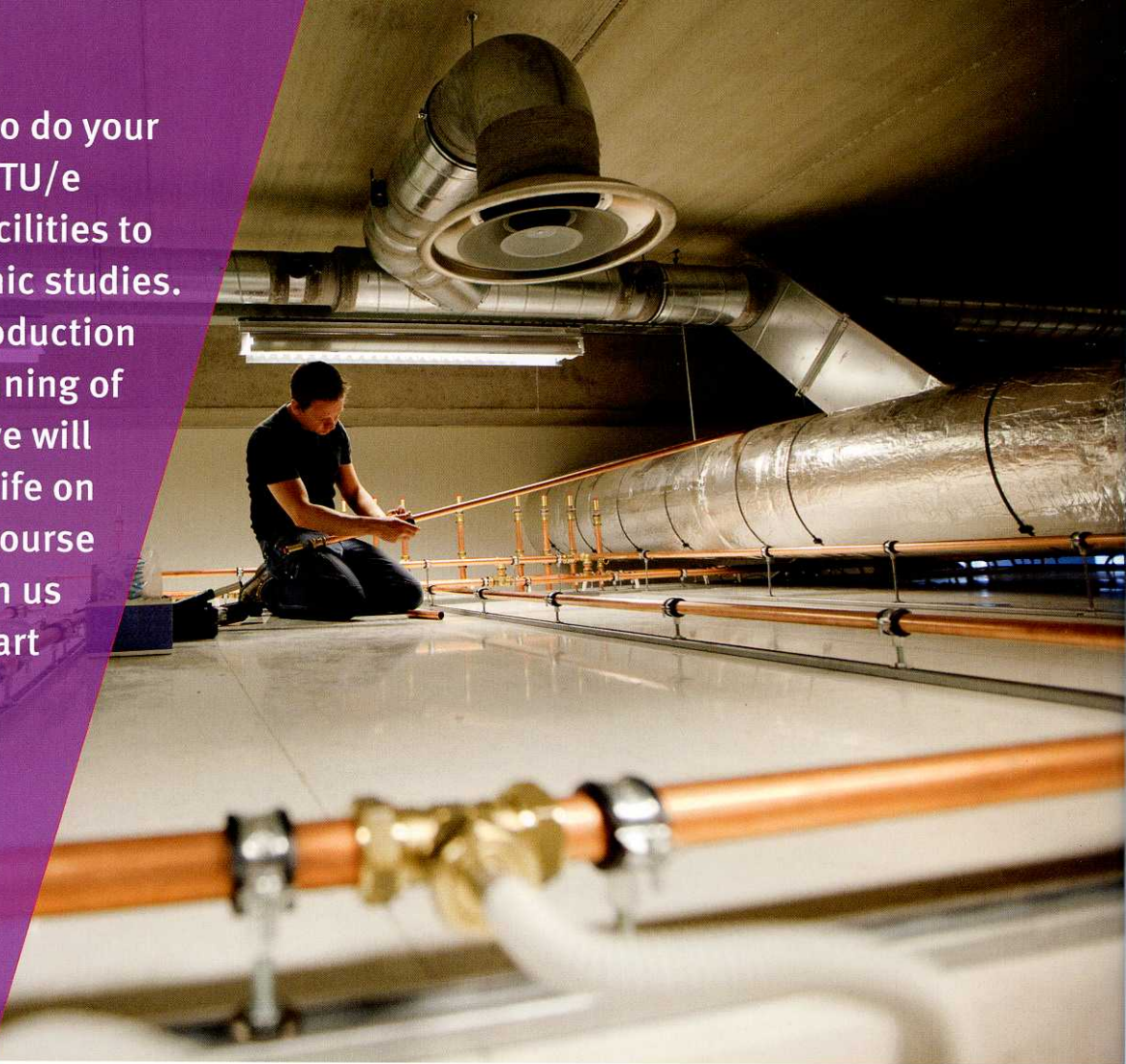
Master's program Systems and Control

“In my very first physics class the teacher asked us: ‘Why is it still light outside when the sun has set?’ I found that a fascinating question, and since then I’ve been sure that I wanted to do a technological and innovative study program. I took my Bachelor Intelligent Systems Control in Romania, and this Master is a perfect way to follow it. Why in the Netherlands, and why at TU/e? Quite simple, because the scientists here in my own field are highly respected in other countries. And I can also benefit here from the links with industry. With companies like ASML, Océ and Philips, there are plenty of opportunities for engineers in this region alone. And just as important, it’s a great place to live; the people are nice to you and speak good English.”

As a TU/e student you can buy a powerful notebook, including software, at a special price. At home or at university you will be able to communicate with teachers and fellow students through the university network. You will find your notebook is just as essential as your textbooks and writing materials. You will be able to consult databases, carry out simulations, read electronic publications and practice more exams. And since you will be working right from the start with the same specialized software that is used by professionals, this will give you an edge in the job market. You will find more information about the notebook in the application, admission and finances section of this guide, or on [www.tue.nl/notebook](http://www.tue.nl/notebook).

“With companies like ASML, Océ and Philips, there are plenty of opportunities”

If you have decided to do your Master's program at TU/e there is a range of facilities to support your academic studies. During the TU/e Introduction Program at the beginning of the academic year, we will familiarize you with life on the campus. And of course you can also count on us when you actually start your studies.



# 4

## Program structure

### **A warm welcome for new Master's students**

If you are admitted to a TU/e Master's program, TU/e's International Relations Office will help you find your way in Eindhoven and at the university. The International Relations Office offers a range of services to assist you in making a number of practical arrangements before you travel to Eindhoven. Once you arrive at TU/e you will participate in the TU/e Introduction Program. This intensive three week program will introduce you to studying at TU/e and to living in the Netherlands. In the TU/e Introduction Program you will be guided through the necessary administrative procedures. The TU/e Introduction Program also includes an English language skills course. You will get to know your department and meet other (international) Master's students. You will also take part in social activities, which will help you to quickly make new friends at TU/e. To participate in this TU/e Introduction Program, you will need to arrive in Eindhoven by the beginning of August. When you arrive in Eindhoven, you will be met at the train

station by a TU/e student, who will accompany you to your accommodation. For more detailed information about this TU/e Introduction Program you can check the website.

### **Ongoing support**

After the TU/e Introduction Program has ended, you will continue to receive support from the student coaches of the Education and Student Service Center. They will help you with practical matters and will answer any questions you may have.

### **Program structure**

For most Master's programs the first year consists of theoretical study, assignments and laboratory work. Time in the second year is spent largely on your final thesis, which can involve participation in an advanced research or design project at TU/e or a research assignment within a company. You will already be doing an engineer's job then, but still under the supervision of a professor.



### Keeping track of academic records

TU/e uses the European Credit Transfer System (ECTS) to keep track of your study performance. All the Master of Science programs have a two-year (24 month) duration comprising 120 educational credits. Each academic year begins and ends in August/September. Since this system is used throughout Europe, your academic record will easily be recognized if you want to continue your education at another university or if you apply for a job abroad. The European Committee awarded the prestigious Diploma Supplement label to TU/e for its academic records underlining the fact that our academic records are easily recognized in the rest of Europe. As a TU/e student you can check your own credits via the TU/e Intranet.

### Supervision of studies

TU/e aims to create optimal study conditions to enable you to keep up with the two-year schedule of the Master's degree program. Each program has its own student counselor. He or she will discuss your study results with you, and can advise you on things like examination planning or your choice of subjects. If you have any problems with your study, difficulties in your personal life, personal questions or business matters you can always turn to the TU/e Education and Student Service Center (STU)

where you can call on the assistance of a student advisor. He or she offers help directly or mediates with persons or organizations both inside and outside the university, if needed. These contacts are confidential, which means that your student advisor will not give any information to others without your approval.

## Each program has its own student counselor

Besides personal assistance, STU offers several workshops and trainings as well. For example, workshops in relation to applying for a job, and personal development. For more information, please don't hesitate to contact STU.

Of course you can decide to find a job after gaining your Master of Science degree, but it is also possible to continue your studies at TU/e. If you want to continue your education after completing your Master's degree program, it is good to know that TU/e offers a wide package of follow-up programs. The most important of these are briefly describes below.



# 5

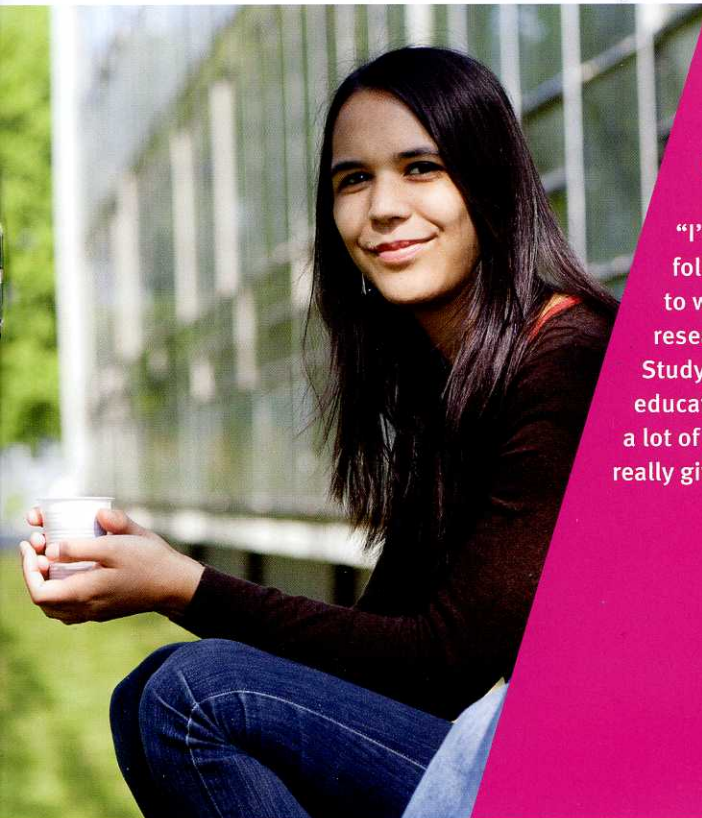
## After your MSc

### PhD

If you decide to study for a doctorate, this title will give you a sound basis for a scientific career. A doctoral study lasts four years. Doctoral candidates are employed by TU/e and fulfill an important function at the university: they are responsible for the reputation and continuity of the research work. The desired profile of doctoral candidates consists of a sound measure of scientific curiosity and the motivation to advance the knowledge base in their research areas. However, other qualities such as creativity, independence, communication skills and team spirit are equally essential.

### Postgraduate programs in technological design

If you are considering a career in industry or business after you graduate, then it is worth knowing that you can get an excellent preparation for it at the 3TU.School for Technological Design, Stan Ackermans Institute. This institute is a partnership between TU/e, Delft University of Technology and the University of Twente. You will follow a two-year program as a trainee technology designer. As well as the personal qualification program, the first year comprises a number of courses that have been specially developed for the designer's programs. These courses, in many cases, involve group work in the form of cases or projects.



## Student Fanni Daruny Sypaseuth

Master's program Chemical Engineering

"I'm really looking forward to the coming months; up to now I've mainly followed lectures, but now it's time for some 'real' research. I find it great to work in the lab, and when I graduate I'd very much like to continue with research: either by doing a PhD or in the R&D department of a big company. Studying at TU/e should certainly enable me to do that. You get a high quality education here, and you're supervised by top scientists. As well as that there's a lot of attention in the teaching on current topics and developments. That really gives you the feeling that you're ready to start work in the world outside."

Most programs are conducted in English, and a large proportion of students come from different countries. On successfully completing the program, you will receive a PDEng (Professional Doctorate in Engineering) diploma, giving you the right to use the academic title PDEng. A Master's degree is required for admission, and there is a stringent selection procedure. Most courses allow you to start the program at different times during the year.

There are 11 programs:

- Architectural Design Management Systems
- BioProduct Design
- Bioprocess Engineering
- Design and Technology of Instrumentation
- Information and Communication Technology
- Logistics Management Systems
- Mathematics for Industry
- Process and Product Design
- Process and Equipment Design
- Software Technology
- User System Interaction.

For more information, visit: [www.3tu.nl/sai](http://www.3tu.nl/sai).

### TiasNimbas Business School

As the business school of TU/e and the University of Tilburg (UvT), TiasNimbas Business School provides part-time academic programs for professionals in a range of specialized areas. The interaction between practical applicability and conceptual skills is a central factor in these programs. By making use of the complementary character of the two universities, the innovative knowledge and the quality of the various departments and research institutes of TU/e and UvT, TiasNimbas Business School is able to offer an integrated range of top-level programs for both (experienced) managers and professionals.

**"You're supervised by  
top scientists"**

If you want to enroll as a student in one of the Master's degree programs at TU/e, you will first need to apply for admission. TU/e assesses whether your previous education meets the requirements for admission.



## 6 Application, admission and finances

### General requirements

There are some general requirements for admission to the Master of Science programs. The first requirement is that you must have a relevant Bachelor's degree (or equivalent), based on a program of sufficient academic level and quality to be able to start and successfully complete the TU/e Master's program for which you wish to apply. In addition, you must be able to demonstrate sufficient mastery of the language in which the program is taught. All of the TU/e's Master's programs are conducted in English (except for Medical Engineering). You are expected to be proficient in English before you arrive in the Netherlands. Therefore a test will be acquired. There may also be specific additional requirements for some Master's programs, depending on your Bachelor's education. Full information is available on [www.tue.nl/masterprograms](http://www.tue.nl/masterprograms).

### Specific requirements

The application procedure to be followed depends on the kind of Bachelor's diploma you have. The application requirements are described in detail on [www.tue.nl/masterprograms](http://www.tue.nl/masterprograms) (Admission). Students with a Bachelor (of Science) diploma from a university other than TU/e, TU Delft or University of Twente are required to send a number of specific documents with their applications. A full list of the required documents and the application form are available at [www.tue.nl/masterprograms](http://www.tue.nl/masterprograms).

### Application procedure

In order to apply, you have to complete the online application form on [www.tue.nl/masterprograms](http://www.tue.nl/masterprograms). You will also need to send a complete application package of originals/certified copies to the TU/e International Relations Office. You will receive a confirmation e-mail from the International Relations Office, which includes your application number. If you have not submitted all the required documentation you will be notified by e-mail, and



further processing of your application may be delayed until the missing documents have been received by the International Relations Office. Complete applications are evaluated by two separate committees: the Central Admissions Board checks the authenticity of your documentation and your level of English, and the Departmental Admissions Board evaluates your previous educational background. The application procedure takes approximately eight weeks. It is essential that you send all the required documents by post. Applications by fax or e-mail are not accepted. Please check the website for full and up-to-date information and for the closing dates for applications. If you have any further questions about the application procedure and admissions, please contact the STU/International Relations Office: [io@tue.nl](mailto:io@tue.nl).

### Services after admission

If you are admitted to one of our Master's programs, there are many things you will need to organize. To help you to make the necessary arrangements, the International Relations Office/Education and Student Service Center (STU) offers a number of services, including:

### Before arrival:

- Support in priority visa application (if needed)
- Accommodation
- Information on enrolment and other procedures
- Information about living in the Netherlands
- Information about student life and study facilities in Eindhoven and at TU/e.

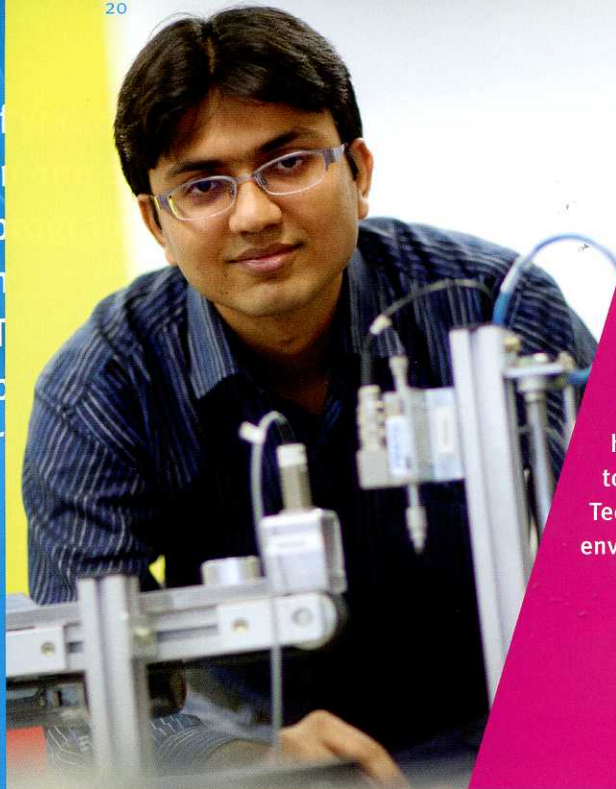
### On arrival:

- 'Meet & greet' service
- Opening a bank account
- Insurance arrangements
- Residence permit application support
- Enrolment support
- TU/e Introduction Program.

The International Relations Office can be reached by email: [io@tue.nl](mailto:io@tue.nl). For more information please visit [www.tue.nl/masterprograms](http://www.tue.nl/masterprograms).

### Scholarships

You can qualify for a scholarship to fund your studies at TU/e. You can find possible sources of scholarships on the websites of both TU/e ([www.tue.nl/masterprograms](http://www.tue.nl/masterprograms)) and Study in Holland ([www.studyinholland.nl](http://www.studyinholland.nl)) as well as at [www.grantfinder.nl](http://www.grantfinder.nl). Some of the scholarship options at TU/e are described below.



## Student Sikandar Moten

Master's program Mechanical Engineering

"I can recommend Eindhoven to every international student. TU/e offers high-quality education, given by lecturers and professors who are highly regarded all over the world. The university is also surrounded by a lot of high-tech companies, which gives students and researchers numerous opportunities both on and off the campus. As well as that, Eindhoven is an international and multicultural place to live. There are plenty of Chinese, Turkish and Indonesian shops, so just about everyone will feel at home here. I'm about to start doing research at Philips Research, which I was able to arrange through the good contacts between the professors and the High Tech Campus. If I could work in the same kind of scientific and international environment one day, I would be very happy."

For the latest information and advice on scholarships, visit our website or contact the International Relations Office ([io@tue.nl](mailto:io@tue.nl)).

- **Amandus H. Lundqvist Scholarship Program**

Together with international high-tech companies and research institutes in the region, TU/e offers a considerable number of Amandus H. Lundqvist Scholarship Programs (covering tuition fees, part of the costs for the visa/residence permit and a contribution to the living costs) for highly talented international students. This is no full cost scholarship. The Amandus H. Lundqvist Scholarship Programs are awarded by TU/e and top technology companies and institutes, such as ASML and Océ. These scholarships cover a period of five years, two years for studying your Master's at TU/e and three years of working for the company that sponsors your scholarship. In this way you will also gain international work experience and increase your career opportunities – in your home country or anywhere else in the world.

**"Eindhoven is an international and multicultural place to live"**

The scholarships will be awarded to highly talented international students who have an excellent academic record and a high score on the admission tests, including English proficiency. You will automatically enter the selection procedure for the TU/e Amandus H. Lundqvist Scholarship Program when you submit a complete application package

before the required deadline and you are subsequently admitted to a Master's program at TU/e. For more information about the Amandus H. Lundqvist Scholarship Program please visit [www.tue.nl/masterprograms](http://www.tue.nl/masterprograms).

- **HSP Huygens Program**

This program is supported by the Dutch government and is open to students from all countries. It is aimed at talented students who wish to study in the Netherlands, either during the final phase of their Bachelor's studies or during their Master's studies. Full information is available at [www.nuffic.nl/hsp](http://www.nuffic.nl/hsp).

- **Netherlands Fellowship Programs (NFP)**

This program, funded by the Dutch Ministry of Foreign Affairs, awards scholarships to professionals who are already in employment. Applicants must be nationals of one of the 57 selected countries and nominated by their employers, since the training must contribute to the development of the local organization for which they work. You can find a list of the selected countries and complete, up-to-date information on the TU/e website or at [www.nuffic.nl/nfp](http://www.nuffic.nl/nfp).

- **STUNED**

The STUNED Scholarship Program is part of the bilateral development cooperation between Indonesia and the Netherlands. The program enables professionals to take a Master's degree course or a postgraduate course at a university in the Netherlands to further enhance their professional knowledge and skills in areas that are critical for the development of their country. The target group is government officials (central





and regional), NGO officials, lecturers, teachers and journalists. Employees of private companies working in development-related sectors may also apply. For full information visit the TU/e website or [www.grantfinder.nl](http://www.grantfinder.nl).

### Student grant ('Studiefinanciering')

A student grant from the Dutch government is called 'studiefinanciering' in Dutch. If you live in the Netherlands but don't have the Dutch nationality, you may still be eligible for this funding. For more information check out [www.ib-groep.nl](http://www.ib-groep.nl). If you are a non-European Economic Association (EEA) student and come to the Netherlands on a student visa, you will not be eligible for this study grant.

### Tuition fees

Students from countries in the EEA are required to pay the legally determined tuition fee. This is 1,672 euros for the academic year 2010 - 2011, and is reviewed each year by the Ministry of Education. The tuition fee for non-EEA Master's students for the academic year 2010-2011 is 8,818 euros and will be 12,000 for the academic year 2011-2012. The tuition fee is set each academic year, with a correction for inflation. For the latest information, visit [www.tue.nl/masterprograms](http://www.tue.nl/masterprograms). Shortly after you have completed the enrolment form and paid the tuition fee, you will receive your student card and the accompanying proof of enrolment. These will be sent to you automatically.

### Insurance

Students from outside the Netherlands are not automatically insured in the Netherlands. Since proper health and liability insurance are mandatory

in the Netherlands, it is important that you arrange your insurance either before coming to the Netherlands or immediately after your arrival. The International Relations Office can inform you about insurance and help you with taking out insurance. Once you live in the Netherlands you can look for a family doctor or dentist in your neighborhood or you can visit the university medical or dental service.

### Cost of living

If you intend to study in the Netherlands it is important to make sure that you have sufficient financial means of support. The cost of living in the Netherlands is comparable to Western European standards, which means that you will need at least 10,000 euros per year, in addition to your traveling expenses, the tuition fee and, if you apply at TU/e, notebook payments.

### Jobs

Students from countries outside the EEA are allowed to work a maximum of 10 hours per week in the Netherlands. A work permit must be applied for through your employer. Students who are residents of one of the EEA countries can work more hours. You can look for jobs both in your own department or outside the university. You must make sure that you have the right insurance before you start a job. From the moment you start a job, you are no longer just a student, but also an employee. The International Relations Office can inform you about this. Students who have been awarded an Amandus H. Lundqvist Scholarship Program to fund their studies at TU/e are strongly advised NOT to start working in the Netherlands, as this can cause serious scholarship problems with the Dutch Tax Office.

To make studying more accessible, TU/e has introduced a notebook program, provides language courses, job interview coaching, a child-care center, textbooks and lecture notes.



# 7

## Facilities

### Notebook

TU/e offers you a powerful notebook computer at a very attractive price, including the necessary software, high-quality service and helpdesk, insurance, carrying bag and a solid lock. The total cost of the notebook is 1,600 euros of which you are asked to pay 800 euros yourself. You can pay this at once or by means of an interest-free loan with repayments spread over two years, at 400 euros per year or 33,33 euros per month. In addition, you will be asked to sign a loan agreement for 800 euros, part of which will be depreciated after each academic year. Once you have graduated, the remaining debt will be automatically reduced to zero. If you are admitted to TU/e, you will automatically be sent an information package including information on the notebook.

For more information, visit [www.tue.nl/notebook](http://www.tue.nl/notebook).

### Education and Student Service Center (STU)

STU is there for you throughout your studies at TU/e. They can arrange counseling in study or in personal matters and they give training courses and workshops throughout the year in the area of self-assessment, interviews and assessment centers. STU also provides individual coaching in the area of job applications (discussing your application letter or CV, practicing job interviews) and houses the International Relations Office. For more information, visit [www.tue.nl/masterprograms](http://www.tue.nl/masterprograms).

### Language courses

The Communication, Linguistics and Technology Center (CTT) offers language courses and a Language Lab.